

ROOFER

Upstate
roofing, inc.

Integrity in Action

1300 Brighton-Henr. TI. Rd.
Rochester, NY 14623-2409

Phone: 585-272-8050
Toll-Free: 800-458-8400
Fax: 585-272-7189

www.upstateroofing.com

DESIGN ARCHITECT

**SHORE
TILBE
IRWIN
& PARTNERS**



Shore Tilbe Irwin and Partners are pleased to provide design services for this exciting new YMCA

Tel: 1-416-971-6060
www.stipartners.com

up Project of the Month

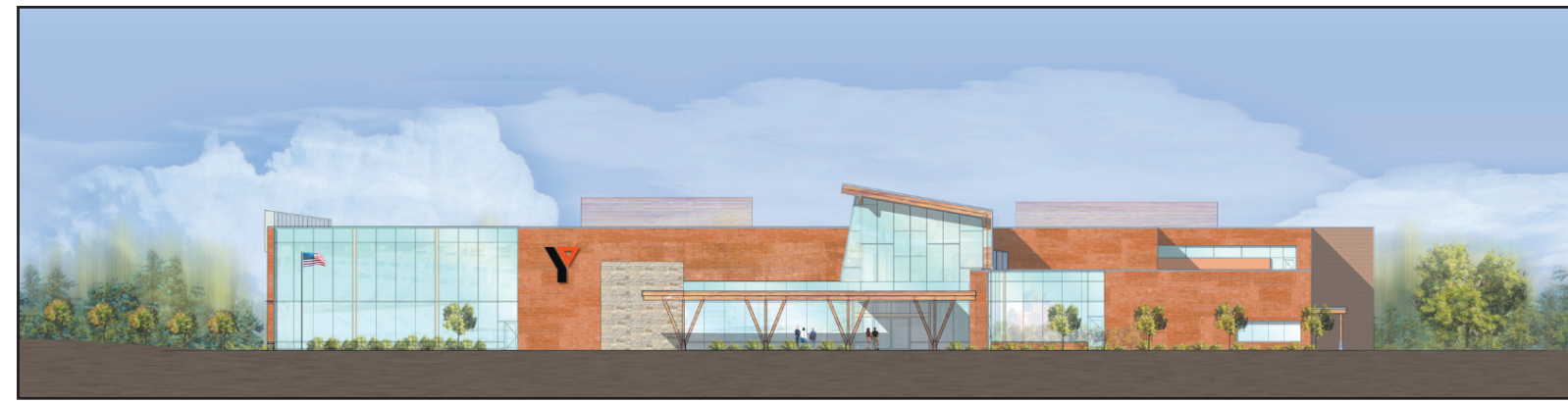
PROJECT TEAM INCLUDES: SHORE TILBE IRWIN & ASSOCS., LECHASE CONST., M/E ENG., PASSERO ASSOCS. & UPSTATE ROOFING
The Eastside YMCA: A 69,000 s/f recreational facility where people can gather and be a part of a community

PENFIELD, NY Family isolation. Childhood obesity. No safe place to play. These are a few of the problems associated with suburban sprawl and the lack of an active community center. To help address these problems, the YMCA of Greater Rochester is constructing a new recreational facility that will be more than just a place to work out - it will be a place for families and people of all ages to gather and be part of a healthy community.

The new facility will provide the area an array of services that do not currently exist in the vicinity. A local YMCA is often perceived as a quality of life issue for many families and serves as an anchor for the community. This Y is designed to appeal to all members of the populace.

Planning

Nearly 20 years ago, the YMCA of Greater Rochester began planning for the Eastside YMCA as part of its strategic plan to serve Monroe and surrounding counties.



Rendering of the Eastside YMCA, Penfield

Existing YMCAs in Webster and Pittsford served their communities well, but residents of the town and areas east had to travel a great distance to either of these facilities. As development and population grew and the in east side of the county, planning began to build a facility to serve area residents.

The Eastside YMCA is now under construction and is scheduled to

open in October. The facility is centrally located on Rte. 250 near the intersection of Rtes. 250 and 441. The \$15 million YMCA will be one of the largest in the Monroe County area, measuring 69,000 s/f.

Local engineering and architectural firm Passero Associates teamed up with the Canadian design firm Shore Tilbe Irwin & Partners as design architect. Other local firms working on the project include M/E Engineering as mechanical/electrical engineer, Jensen Engineering as structural engineer, and LeChase Construction as construction manager.

Market research determined that the Rte. 441 corridor, near Rte. 250, would be an ideal location for the Eastside YMCA. Passero Associates assisted the Y in acquiring the land, with the consent of the town. The new Y is situated on over 50 acres, giving the facility room for outdoor programs, a future outdoor aquatic center and a possible day camp.



Aerial view of the construction of the Eastside YMCA, Penfield

GENERAL CONTRACTOR



Open Design

The facility will feature a compelling design and site placement that brings light and an open feeling into every corner of the building. The building will have the feel of a modern lodge complete with a fireplace.

Jeff LaDue, project manager for Passero Associates, said, "The Eastside YMCA has been designed to incorporate a unique design aesthetic with state-of-the-art equipment and fitness programs. The building

as a whole will be full of light from the use of extensive glazing around the perimeter and above. The spaces are generally open to each other either physically or visually, creating a very open and dynamic space."

Accessibility for all is a primary mission of the Eastside YMCA. The facility consistently exceeds the standards of the Americans with Disabilities Act. Designers took into consideration not only the needs and requirements of those with disabili-

ties, but studied and implemented the best ways for all members to fully enjoy all that the Y has to offer.

Community Center

The new Eastside Family YMCA features more social space than a typical Y. Community areas transition from use by seniors during the day to appeal to teens in the evening.

The facility is projecting that about 15,000 people will join. Current members of other branches will be given the opportunity to upgrade their membership to a Passport level that will enable them to visit any of the local Ys, including the new facility.

Mark Passero, VP of Passero Associates, said, "My family and many of our friends and neighbors are very excited to see this YMCA under construction. We're happy that families in our community will have so many opportunities to be active and to be a part of such an exceptional organization."

Community support for the YMCA has been positive. After a lengthy and thorough town approval process, the facility is awaited by many in the area.

The Eastside YMCA - Project Team

Design Architect	Shore Tilbe Irwin & Partners
General Contractor	LeChase Construction
Mechanical Engineer	M/E Engineering, P.C.
Project Architect/Site Engineer	Passero Associates
Roofer	Upstate Roofing, Inc.
Structural Engineer	Jensen Engineering, P.C.

Welcome to the all new Eastside Family YMCA - a place where confidence is born, dreams are fueled and a community comes together.

LeChase Construction was proud to be a part of this community project.

LeChase. Building Partnerships.

www.lechase.com



MECHANICAL ENGINEER



Mechanical/Electrical Engineering Consultants

150 North Chestnut Street
Rochester, NY 14604
585.288.5590

www.meengineering.com

Rochester • Buffalo • Syracuse • Albany

M/E Engineering, P.C. is the region's leading mechanical and electrical engineering Consulting firm, offering expert services in:

- Heating, Ventilation & Air Conditioning
- Energy Services
- Electrical Power Distribution
- Lighting
- Data/Telecommunications
- Fire Alarm/Security Systems
- Plumbing/Fire Protection
- Systems Commissioning
- Green Building Design
- Computer Aided Engineering Services CFD Modeling



Value driven solutions

PROJECT ARCHITECT/SITE ENGINEER

Passero Associates
Engineering Architecture

Quality People Serving Quality Clients



Producing Quality Projects

Our experienced professionals provide expertise in the fields of:

- Municipal Projects
- Airport Improvements
- Institutional Developments
- Industrial Developments
- Streets, Highways and Infrastructure Improvements
- Commercial Retail/Office Developments
- Multifamily & Single Family Residential Developments

www.passero.com

100 Liberty Pole Way
Rochester, NY 14604
585.325.1000

