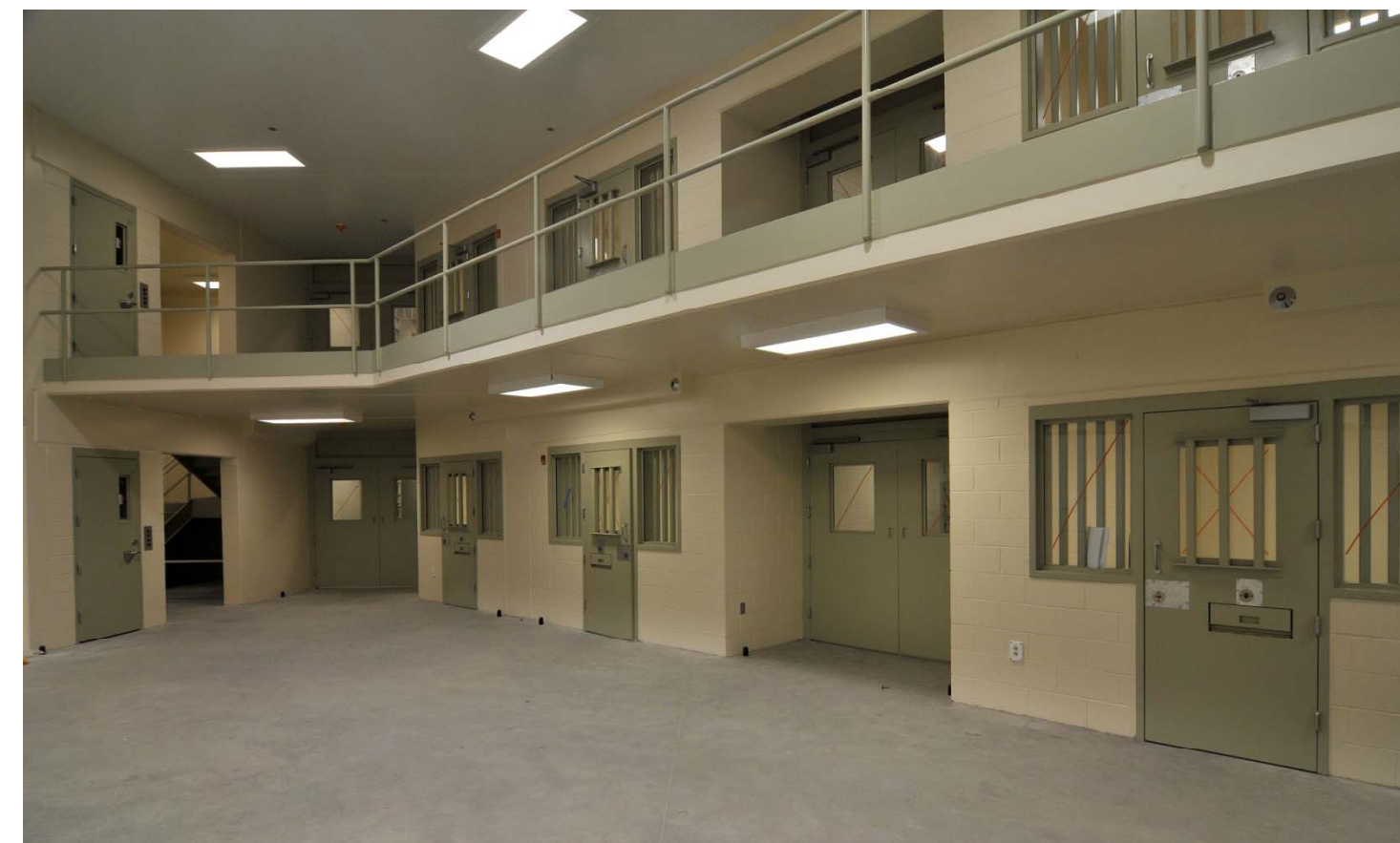
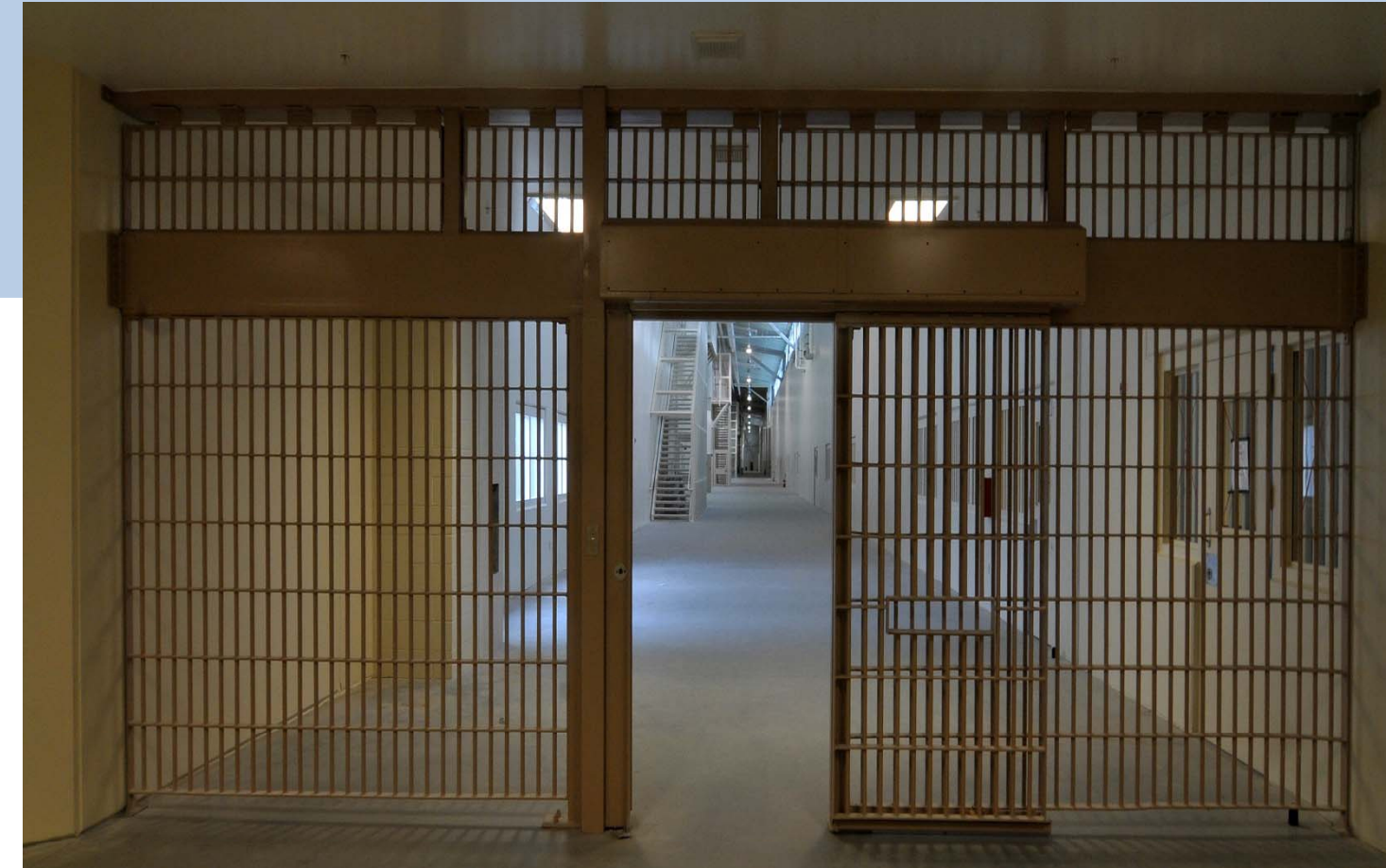


Federal Correctional Institution - Berlin

Berlin, New Hampshire

DESIGN-BUILD MERITS

- Reduced the building's energy consumption by 32% below ASHRAE standards
- Hybrid design deviated from standard program documents to meet new objective
- Pre-cast cell installation saved time and cost
- Completed 15 days early despite three years of record snowfall
- 78% Locally-Hired Workforce
- 45% Small Business Participation
- U.S. Department of Justice Women-Owned / HUBZone Small Business Subcontracting Achievement Award
- Within project budget



2011 DBIA NATIONAL DESIGN-BUILD PROJECT AWARD

MERIT AWARD WINNER

CATEGORY: CORRECTIONAL FACILITIES

DESIGN-BUILD TEAM

DESIGN-BUILD TEAM
LEADER & GENERAL
CONTRACTOR

Bell/Heery Joint Venture

ARCHITECTS

Edward Rowse Architects (*Architect of Record*)
KMD Architects (*Associate Architect*)

ENGINEERS

Tetra Tech Rizzo (*Civil*)
M/E Engineering, P.C. (*M/E/P*)
LeMessurier Consultants, Inc. (*Structural*)

BELL/HEERY

